

GARNET: Preliminary Safety, Efficacy, Pharmacokinetic, and Biomarker Characterization from a Phase 1 Clinical Trial of TSR-042 (Anti-PD-1 Monoclonal Antibody) in Patients with Recurrent/Advanced NSCLC

Desamparados Rosa Perez,¹ Janakiraman Subramanian,² Joanna Pikiel,³ Maria-Pilar Barretina-Ginesta,⁴ Jose Trigo,⁵ Wei Guo,⁶ Sharon Lu,⁶ David Jenkins,⁶ Kai Yu Jen,⁶ Hadi Danaee,⁶ Steven Dunlap,⁶ Ellie Im,⁶ Victor Moreno⁷

¹Department of Medical Oncology, University Hospital, Valencia, Spain; ²Saint Luke's Cancer Institute, Kansas City, MO; ³Regional Center of Oncology, Gdansk, Poland; ⁴Institut Català d'Oncologia, Hospital Universitari Dr. J. Trueta, Girona, Spain; ⁵Servicio de Oncología Médica y Unidad de Fases I, Hospital Universitario Virgen de la Victoria, Málaga (IBIMA), Spain; ⁶TESARO, Inc., Waltham, MA; ⁷START Madrid-FJD, Hospital Fundación Jiménez Díaz, Madrid, Spain

GARNET
TSR-042 CLINICAL TRIAL

BACKGROUND

- TSR-042 is an investigational humanized anti-programmed death 1 (PD-1) monoclonal antibody that binds with high affinity to the PD-1 receptor and effectively blocks its interaction with the PD-1 ligands PD-L1 and PD-L2.
- TSR-042 is the only anti-PD-1 therapy administered as a monotherapy every 3 weeks (Q3W) for 4 doses then every 6 weeks (Q6W) until disease progression.^{1,2}
- In clinical trials, preliminary data show that TSR-042 has activity and safety profiles that are similar to approved anti-PD-1 therapies.³
- The ongoing GARNET trial (NCT02715284) is evaluating TSR-042 as monotherapy in patients with advanced solid tumors.
- GARNET included a weight-based dose escalation study (part 1) and a fixed-dose safety study (part 2A), both completed³; the results of these studies were used to determine the recommended phase 2 dose (RP2D); 500 mg Q3W for the first 4 cycles then 1000 mg Q6W.
- The study is now enrolling patients with specific tumor types into 4 expansion cohorts (part 2B; ongoing), including endometrial cancer and non-small cell lung cancer (NSCLC).
- Here, we present safety, efficacy, and biomarker data from the previously treated recurrent or advanced NSCLC cohort.

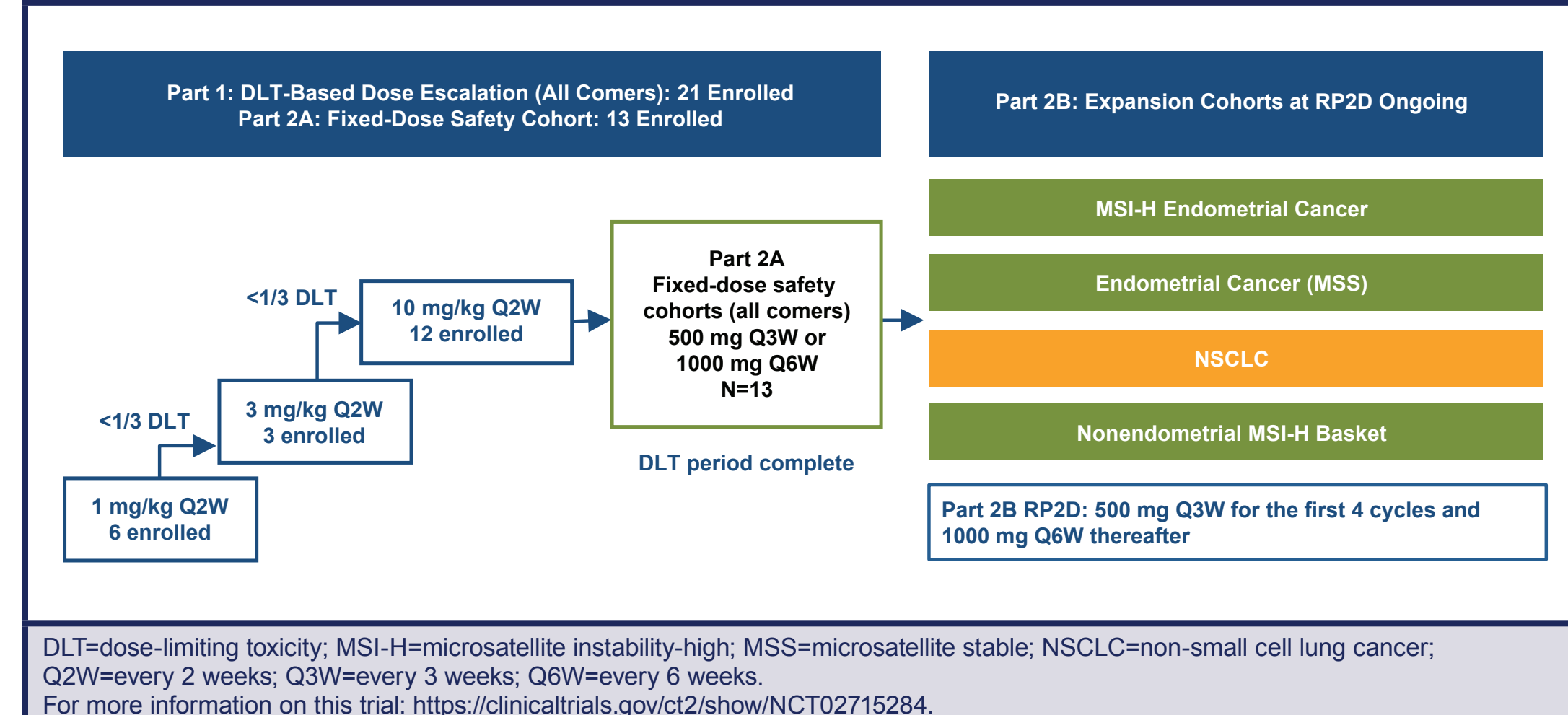
OBJECTIVES

- Primary**
 - To evaluate the clinical activity of TSR-042 at the RP2D in patients with previously treated recurrent or advanced NSCLC.
 - To evaluate the safety and tolerability of TSR-042 at the RP2D.
- Secondary**
 - To further characterize the pharmacokinetic (PK) profile of TSR-042.

METHODS

- Patients**
 - Subjects with previously treated recurrent or advanced NSCLC.
 - Key exclusion criteria included:
 - Prior therapy with agents targeting PD-1, PD-L1, or PD-L2.
 - Uncontrolled central nervous system metastases and/or carcinomatous meningitis, or additional malignancy that progressed or required active treatment within the last 2 years.
 - Active autoimmune disease that required systemic treatment in the last 2 years.
- Study Design**
 - GARNET is a multicenter, open-label, first-in-human phase 1 dose escalation study with expansion cohorts designed to assess the safety, PK, pharmacodynamics, and clinical activity of the PD-1 inhibitor TSR-042 in patients with advanced solid tumors (Figure 1).

Figure 1. GARNET Phase 1 Study



- The part 2B expansion cohort portion of GARNET is evaluating clinical activity, safety, and PK/pharmacodynamics of TSR-042 at the RP2D.
- The primary efficacy endpoints include objective response rate (ORR) and duration of response (DOR) per immune-related Response Evaluation Criteria in Solid Tumors (irRECIST) assessed by investigators.
- Safety parameters include treatment-emergent adverse events (TEAEs), immune-related AEs (irAEs) of interest, and clinical laboratory values.
- Assessments**
 - Antitumor activity was assessed by investigators using irRECIST.
 - Radiographic evaluations and serum-based tumor marker testing were conducted 12 weeks after the first dose and every 6 weeks thereafter.
 - Serum and peripheral blood mononuclear cells were collected for PK and receptor occupancy (RO) analyses, respectively.
 - Tumor PD-L1 expression was measured and PD-L1 tumor proportion scores (TPS) were categorized as <1%, 1-49%, and ≥50% (centrally assessed).
 - Safety was evaluated by TEAEs, irAEs of interest, and clinical laboratory measures.

RESULTS

- Patients**
 - At present, 67 patients in the NSCLC cohort were treated with TSR-042 at the RP2D.
 - Patient demographics and prior lines of therapy are presented in Table 1.
 - Patients in this cohort received a median of 1 prior line of therapy for advanced or metastatic disease.

Table 1. Demographic and Baseline Characteristics

Characteristics	NSCLC (n=67)
Age, mean (SD), yrs	64.8 (9.55)
Median	66.0
Q1, Q3	58.0, 71.0
Min, Max	40, 83
Age group n (%), yrs	
<65	30 (44.8)
≥65 to <75	25 (37.3)
≥75	12 (17.9)
Sex n (%)	
Male	40 (59.7)
Female	27 (40.3)
Median number of prior regimens	1.0
Median number of prior regimens for metastatic disease (range) ^a	1.0 (0-4)

^aHormonal therapy was excluded. NSCLC=non-small cell lung cancer; SD=standard deviation.

PK AND PHARMACODYNAMIC SUMMARY

- The C_{last} for the 500 mg Q3W and 1000 mg Q6W dosing were shown to be equivalent (Table 2).

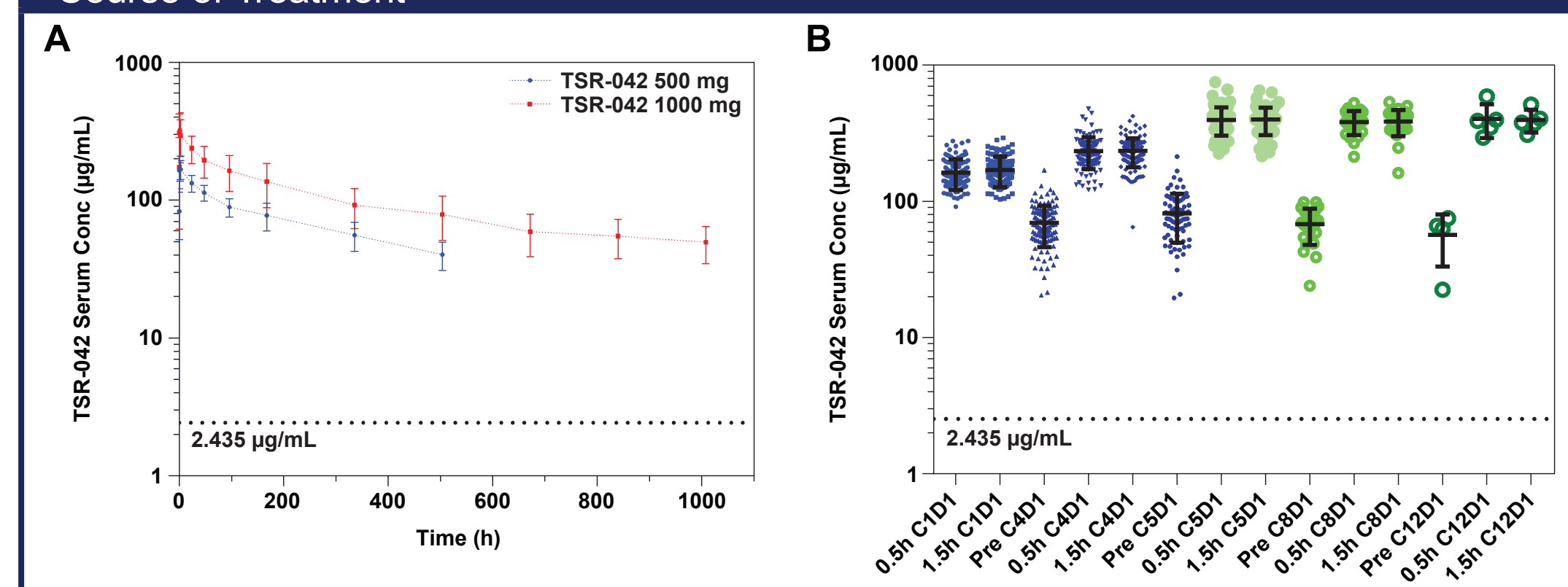
Table 2. PK Summary: 500 mg (Q3W) vs. 1000 mg (Q6W)

Dose Regimen (mg)	C_{max} (µg/mL)	C_{last}^a (µg/mL)	T_{max} (h)	AUC_{0-1ast}^b (h*µg/mL)
500 Q3W (N=6)	174 ± 35.2	40.2 ± 9.31	1.0 (0.5 - 3.0)	36424 ± 6674
1000 Q6W (N=7)	322 ± 101	43.7 ± 18.2 ^c	1.5 (0.5 - 3.0)	91376 ± 26808

Mean ± SD for all but T_{max} (median [range]).
^a C_{last} for 500 mg Q3W was at 504 h while for 1000 mg, it was at 1008 h. ^b AUC_{0-1ast} for 500 mg Q3W was from 0 to 504 h and for 1000 mg Q6W from 0 to 1008 h. ^cn=5.

- Serum concentrations required for full RO were achieved at doses of 500 mg and 1000 mg after single and multiple dosing for all patients tested. The lowest TSR-042 concentration observed for a full RO (2.435 µg/mL) is shown as a dotted line (Figure 2).

Figure 2. (A) Concentration Versus Time Profile Following Single-Dose Administration of TSR-042 (GARNET Part 2A). (B) Sparse PK for GARNET Part 2B (4 x 500 mg Q3W followed by 1000 mg Q6W) Maintain at Least an 8-Fold Margin for Full RO Through the Course of Treatment



SAFETY

- TEAEs were reported in 62 patients with previously treated recurrent or advanced NSCLC (92.5%; Table 3).

Table 3. Treatment-Emergent Adverse Event (TEAEs) in ≥10% of Patients, Safety Population

AE Preferred Term	Cohort E: NSCLC (N=67) n (%)
Subjects with at least one TEAE	62 (92.5)
Fatigue	23 (34.3)
Nausea	11 (16.4)
Decreased appetite	10 (14.9)
Diarrhea	10 (14.9)
Constipation	9 (13.4)
Cough	9 (13.4)
Arthralgia	9 (13.4)
Dyspnea	8 (11.9)
Anemia	7 (10.4)
Pruritus	7 (10.4)
Back pain	7 (10.4)

NSCLC=non-small lung cancer.

- Treatment-related TEAEs were reported in 42 patients (62.7%) (Table 4).

Table 4. Treatment-Related Treatment-Emergent Adverse Event (TEAEs) in ≥10% of Patients, Safety Population

AE Preferred Term	Cohort E: NSCLC (N=67) n (%)
Subjects with at least one treatment-related TEAE ^a	42 (62.7)
Fatigue	16 (23.9)
Nausea	7 (10.4)
Pruritus	7 (10.4)

^aRelated, possibly related, and missing relationship adverse events are considered as related adverse events.

- Grade ≥3 treatment-related TEAEs were reported in 4 patients (6.0%), including rash (n=1), fatigue (n=1), lipase increased (n=1), and transaminases increased (n=1).
- Two patients had related serious AEs, including pancreatitis (n=1) and transaminases increased (n=1).
- Three patients had treatment-related TEAEs leading to treatment discontinuation, including lipase increased (n=1), pleural effusion (n=1), and transaminases increased (n=1).
- No death related to study drug was reported.

CLINICAL ACTIVITY

- At the October 25, 2018 cutoff date, 47 patients with previously treated recurrent or advanced NSCLC had at least 1 tumor assessment or discontinued treatment prior to first postbaseline tumor assessment due to AEs or withdrawal of consent. The best overall tumor response by irRECIST is shown in Table 5.
 - ORR was 31.9% (95% CI 19.1, 47.1). There were 15 patients who achieved partial responses (13 confirmed, 2 unconfirmed; patients with unconfirmed responses have not progressed).
 - Nine of 15 responses (60.0%) are ongoing (Figure 3).

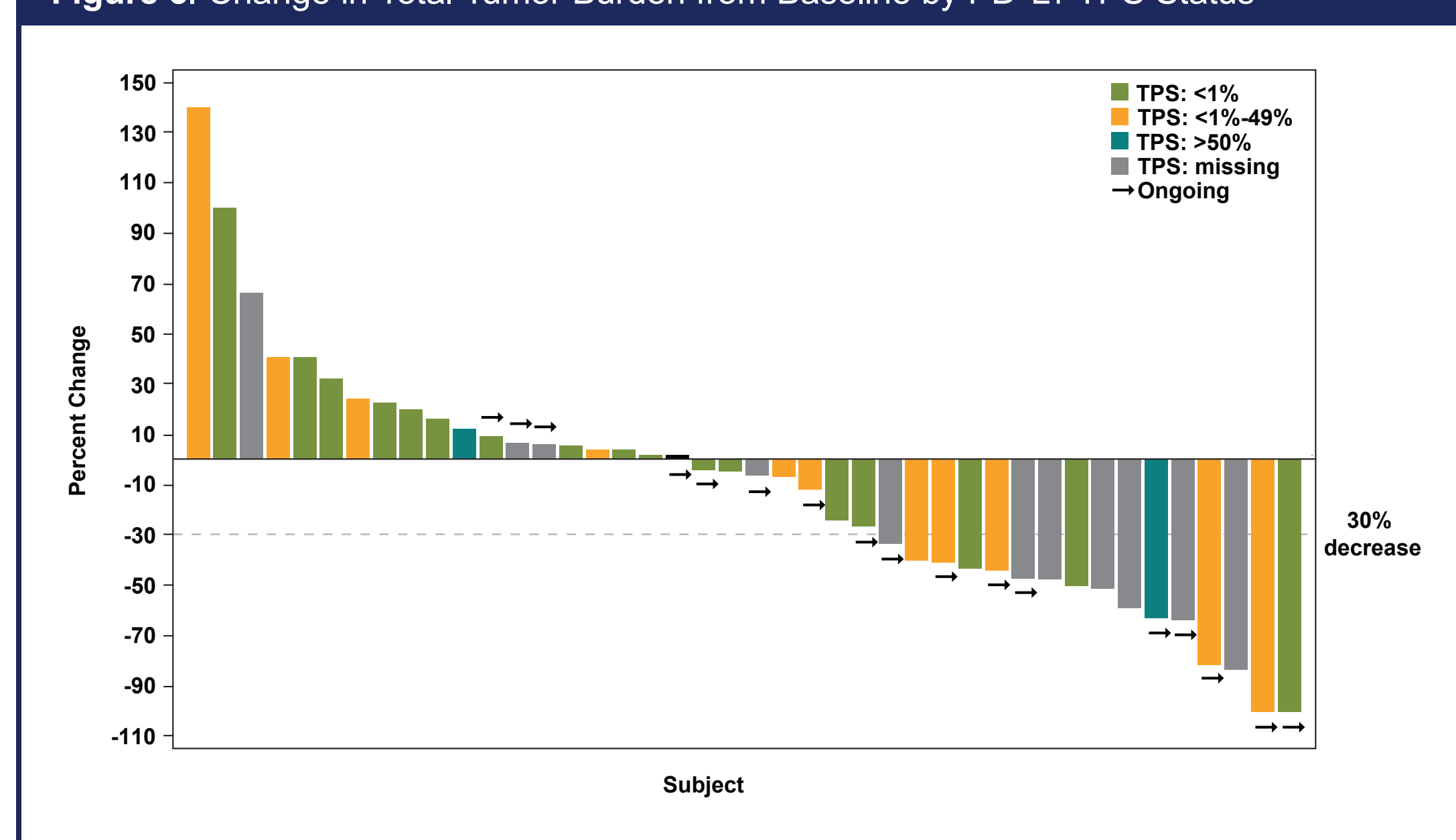
Table 5. Tumor Response Summary Based on irRECIST

Characteristics	Cohort E: NSCLC (N=47) n (%)
Best overall response by irRECIST, n (%)	0
irCR	0
irPR ^a	15 (31.9)
irSD	14 (29.8)
irPD	12 (25.5)
Not done	6 (12.8)
Overall response rate^a	15 (31.9)
Overall response rate 95% CI	19.1, 47.1
Response ongoing	9/15 (60.0)
Disease control rate ^b	29 (61.7)
Disease control rate 95% CI	46.4, 75.5

irCR=complete response, irPR=partial response, irSD=stable disease, irPD=progressive disease.
^aIncluded 2 unconfirmed irPR: one patient still receiving treatment and the other patient discontinued due to AE and has not progressed.
^bDisease control rate: (irCR+irPR+irSD).
Median duration of response was not reached.

- Best percentage change in the sum of target lesions by PD-L1 TPS status is presented in Figure 3.

Figure 3. Change in Total Tumor Burden from Baseline by PD-L1 TPS Status



- Treatment with TSR-042 resulted in durable tumor responses regardless of PD-L1 TPS score (Table 6).

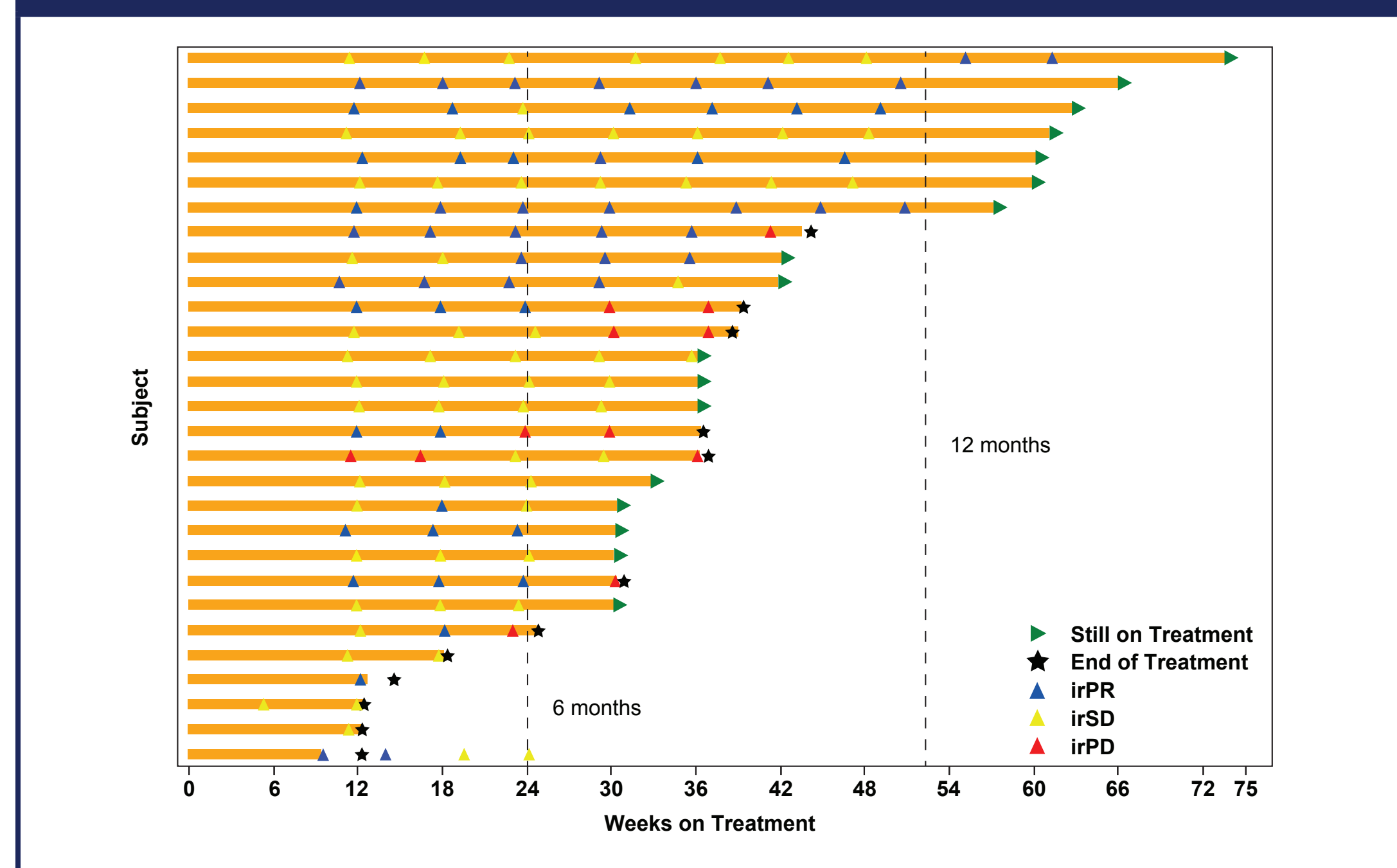
Table 6. Tumor Responses by PD-L1 TPS Score by irRECIST

Characteristics	TPS: <1% (N=19) n (%)	TPS: 1-49% (N=13) n (%)	TPS: ≥50% (N=2) n (%)	TPS: missing (N=13) n (%)	All (N=47) n (%)
Best overall response by irRECIST, n (%)	0	0	0	0	0
irCR	0	0	0	0	0
irPR ^a	3 (15.8)	5 (38.5)	1 (50.0)	6 (46.1)	15 (31.9)
irSD	8 (42.1)	2 (15.4)	0	4 (30.8)	14 (29.8)
irPD	7 (36.8)	3 (23.1)	1 (50.0)	1 (7.7)	12 (25.5)
Not done	1 (5.3)	3 (23.1)	0	2 (15.4)	6 (12.8)
Overall response rate^a	3 (15.8)	5 (38.5)	1 (50)	6 (46.1)	15 (31.9)
Overall response rate 95% CI	3.4, 39.6	13.9, 68.4	1.3, 98.7	19.2, 74.9	19.1, 47.1
Response ongoing	1/3 (33.3)	4/5 (80)	1/1 (100)	3/6 (50)	9/15 (60)
Disease control rate ^b	11 (57.9)	7 (53.8)	1 (50)	10 (76.9)	29 (61.7)
Disease control rate 95% CI	33.5, 79.7	25.1, 80.8	1.3, 98.7	46.2, 95.0	46.4, 75.5

TPS=tumor proportion score, irCR=complete response, irPR=partial response, irSD=stable disease, irPD=progressive disease.
^aIncluded 2 unconfirmed irPR: one patient (TPS: 1-49%) still receiving treatment and the other patient (TPS missing) discontinued due to AE and has not progressed.
^bDisease control rate: (irCR+irPR+irSD).
Median duration of response was not reached.

- Duration of exposure in patients with disease control is presented in Figure 4.

Figure 4. Duration of Exposure in Patients with DCR (irCR+irPR+irSD) Based on irRECIST



CONCLUSIONS

- TSR-042 is an anti-PD-1 monoclonal antibody that binds with high affinity to the PD-1 receptor.
- TSR-042 is administered at 500 mg Q3W for the first 4 cycles and 1000 mg Q6W thereafter, which is less frequent than approved PD-1 inhibitors.
- At this unique dosing schedule, TSR-042 achieved serum concentrations sufficient for full RO throughout the dosing cycle.
- TSR-042 was well tolerated; the safety profile was characteristic of approved PD-1 inhibitors.⁴
- TSR-042 produced a robust response rate (ORR 31.9%). Responses were durable in this population with previously treated recurrent or advanced NSCLC.
- Activity was observed across all PD-L1 TPS categories. Encouraging activity was observed despite the fact that the vast majority (94%) of patients with available PD-L1 status had a TPS <50%.

REFERENCES

- OPDIVO (nivolumab) [prescribing information]. Princeton, NJ: Bristol-Myers Squibb Company; 2014.
- KEYTRUDA (pembrolizumab) [prescribing information]. Whitehouse Station, NJ: Merck Sharp & Dohme Corp; 2017.
- Sachdev JC, et al. *Ann Oncol*. 2017;28(suppl 5):420.
- Borghaei H, et al. *N Engl J Med*. 2015;373:1627-39.

ACKNOWLEDGEMENTS

Writing and editorial support, funded by TESARO, Inc. (Waltham, MA, USA) and coordinated by Teodor G. Paunescu, PhD, of TESARO, Inc., was provided by Cindy Gomez, PhD, Nicole Renner, PhD, and Dena McWain of Ashfield Healthcare Communications (Middletown, CT, USA).